
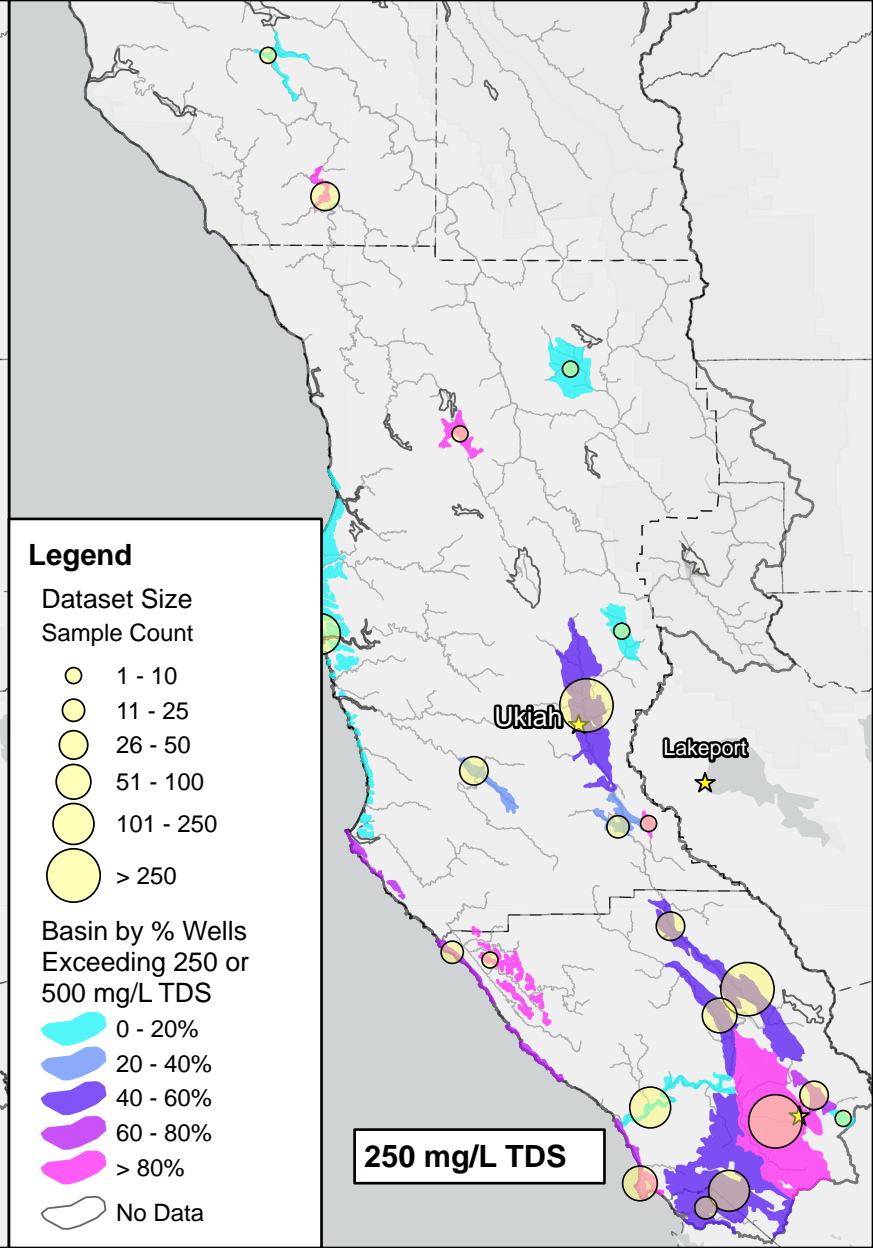
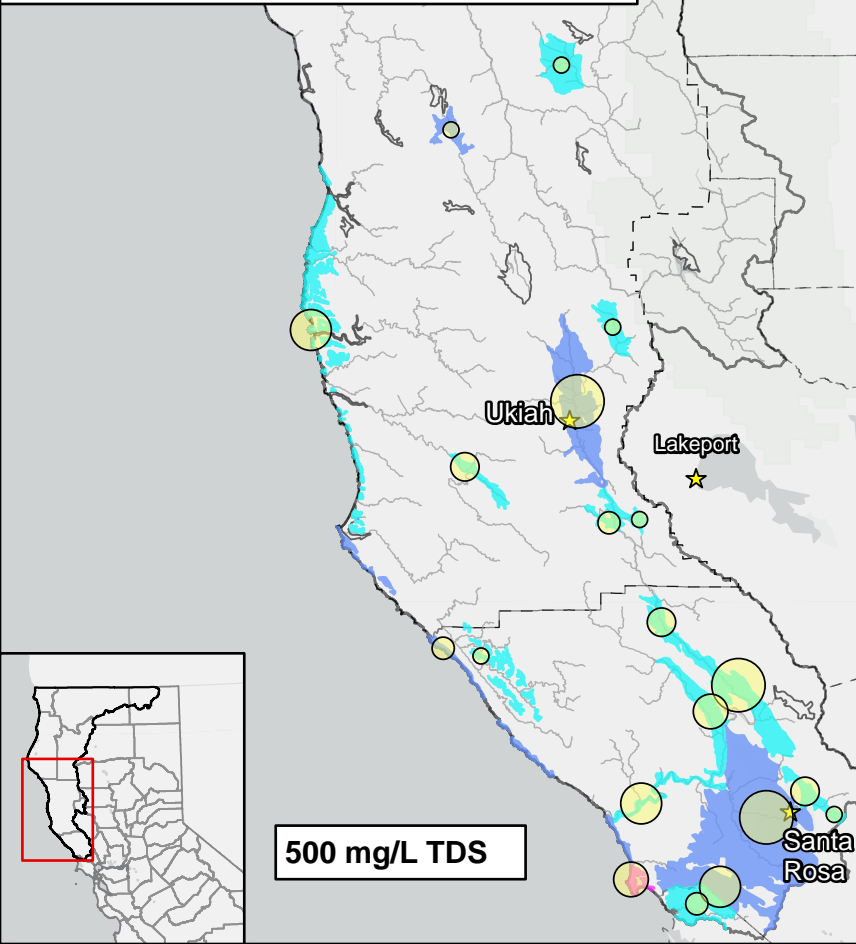


Figure 5: TDS Exceedances by Basin
Sonoma/Mendocino County Basins



Source: NCRWQCB, SWRCB, GAMA, Esri, CA DWR, USDA, USGS

Notes: All data were last accessed and acquired in February 2021. Well data span 2010-2020. The MCL for total dissolved solids (TDS) is 500 mg/L.



Legend

Dataset Size
Sample Count

- 1 - 10
- 11 - 25
- 26 - 50
- 51 - 100
- 101 - 250
- > 250

Basin by % Wells
Exceeding 250 or
500 mg/L TDS

- 0 - 20%
- 20 - 40%
- 40 - 60%
- 60 - 80%
- > 80%
- No Data